

SECTION 600
SANITARY SEWER DETAILS

601	SANITARY SEWER STANDARDS AND SYMBOLS
602	SANITARY SEWER MANHOLE
603	SANITARY SEWER OUTSIDE DROP MANHOLE
604	SANITARY SEWER INSIDE DROP MANHOLE
605	SHALLOW SANITARY SEWER MANHOLE
606	SANITARY SEWER SERVICE LATERAL
607	SANITARY SEWER TRENCH
608	STAINLESS STEEL MANHOLE STEP
609	GREASE TRAP



CITY OF SOLVANG - STANDARD DETAILS

SECTION 600 - TABLE OF CONTENTS

APPROVED BY DIRECTOR
OF PUBLIC WORKS

DO NOT SCALE
DRAWING

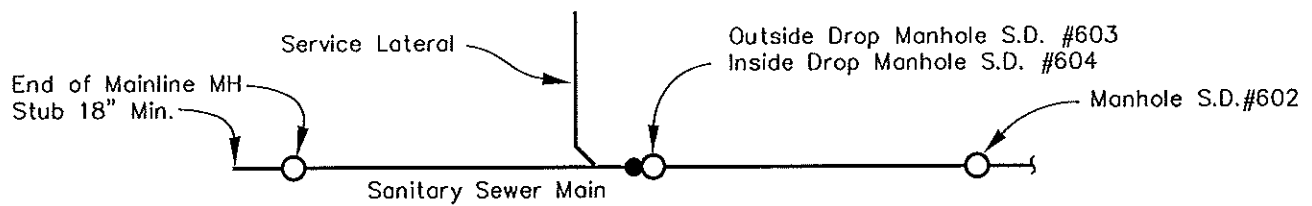
ISSUED: 11-24-2003
REVISED: 6-10-2008

DRAWING NUMBER


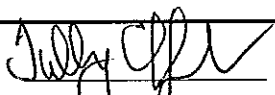
600

1 OF 1

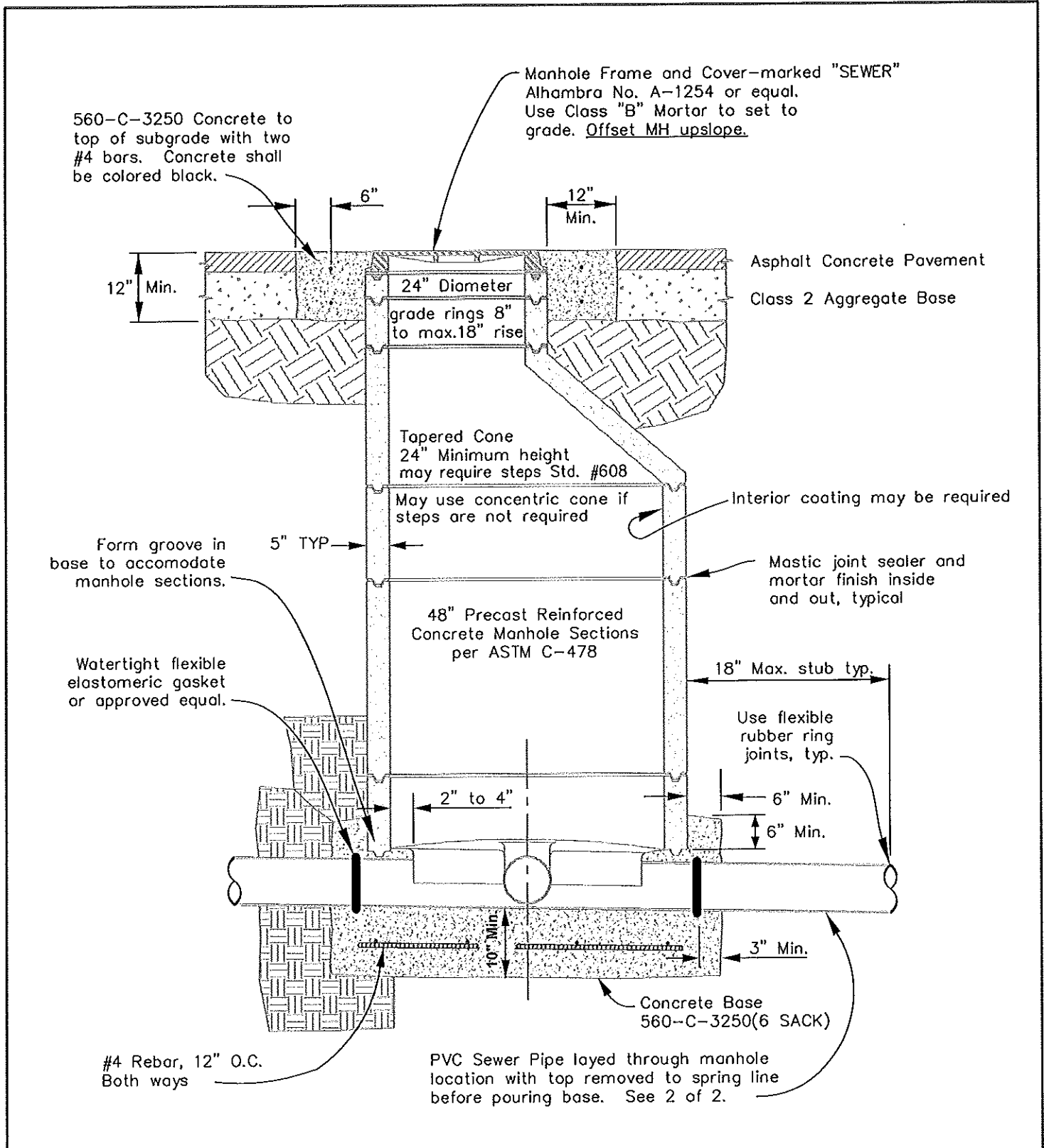
1. Unless noted otherwise, references to Sections and Subsections refer to the Standard Specifications for Public Works Construction.
2. Pipe and fittings for sewer main lines may be ABS Solid Wall Pipe as set forth in Subsection 207-15 or PVC Plastic Pipe as set forth in Subsection 207-17.
3. Pipe and fittings for sanitary sewer service laterals may be ABS Solid Wall Pipe as set forth in Subsection 207-15, PVC Plastic Pipe as set forth in Subsection 207-17 or Polyethylene (PE) Solid Wall Pipe as set forth in Subsection 207-19.
4. Pipe shall be bedded in conformance with Standard Detail 607.
5. Manholes shall be constructed in conformance with Standard Detail 602, 603 or 604 as appropriate.
6. New sewer main lines must be tested according to 306-1.2.12 and 306-1.4.4. and video inspected by contractor, and approved by City Public Works Inspector prior to final acceptance.
7. End of line must be with a manhole and stub. Existing cleanouts may be repaired with a 45' long or 90' long with approval by Public Works Dept.
8. Sanitary sewer service laterals shall be constructed in conformance with Standard Detail 606. Profile Type "A" shall be used unless indicated otherwise in the plans or special provisions. All laterals shall be referenced by the permanent marking of an "S" on the top of curb. Where no curb exists, a 4"x4"x24" redwood post exposed 6" shall be placed next to the cleanout at property line. The post shall be scribed with the letter "S" and painted or stained to reduce weathering.
9. Sanitary sewer service laterals shall be constructed in conformance with Standard Detail 606.




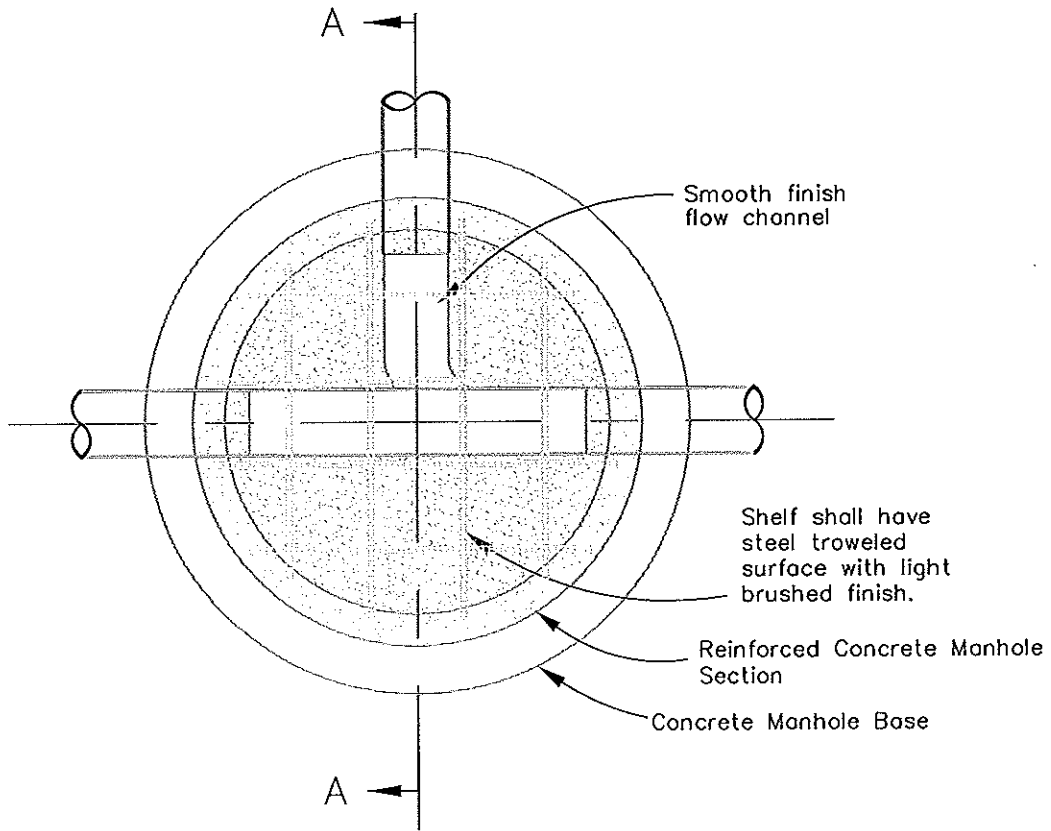
MAPPING SYMBOLS

	CITY OF SOLVANG - STANDARD DETAILS	ISSUED: 11-24-2003 REVISED: 6-11-2008
	SANITARY SEWER STANDARDS & SYMBOLS	DRAWING NUMBER
	APPROVED BY DIRECTOR OF PUBLIC WORKS 	<b style="font-size: 2em;">601 1 OF 1

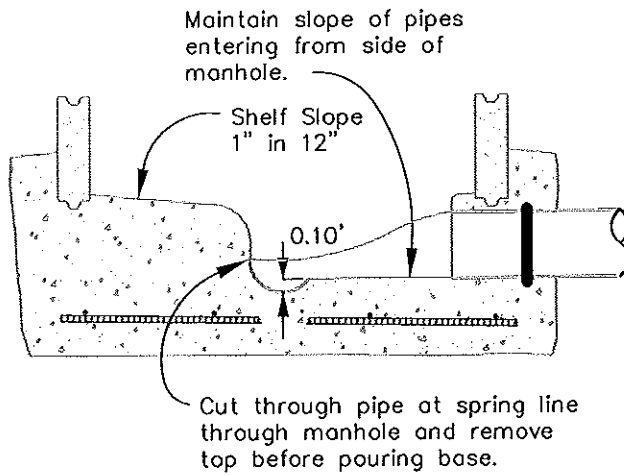
DO NOT SCALE
DRAWING



	CITY OF SOLVANG - STANDARD DETAILS		ISSUED: 11-24-2003
			REVISED: 6-1-2008
	SANITARY SEWER MANHOLE		DRAWING NUMBER
APPROVED BY DIRECTOR OF PUBLIC WORKS	<i>Jully Poff</i>	DO NOT SCALE DRAWING	602 1 OF 2



PLAN OF BASE



SECTION A-A



CITY OF SOLVANG - STANDARD DETAILS

ISSUED: 11-24-2003
 REVISED: 6-1-2008

SANITARY SEWER MANHOLE

DRAWING NUMBER

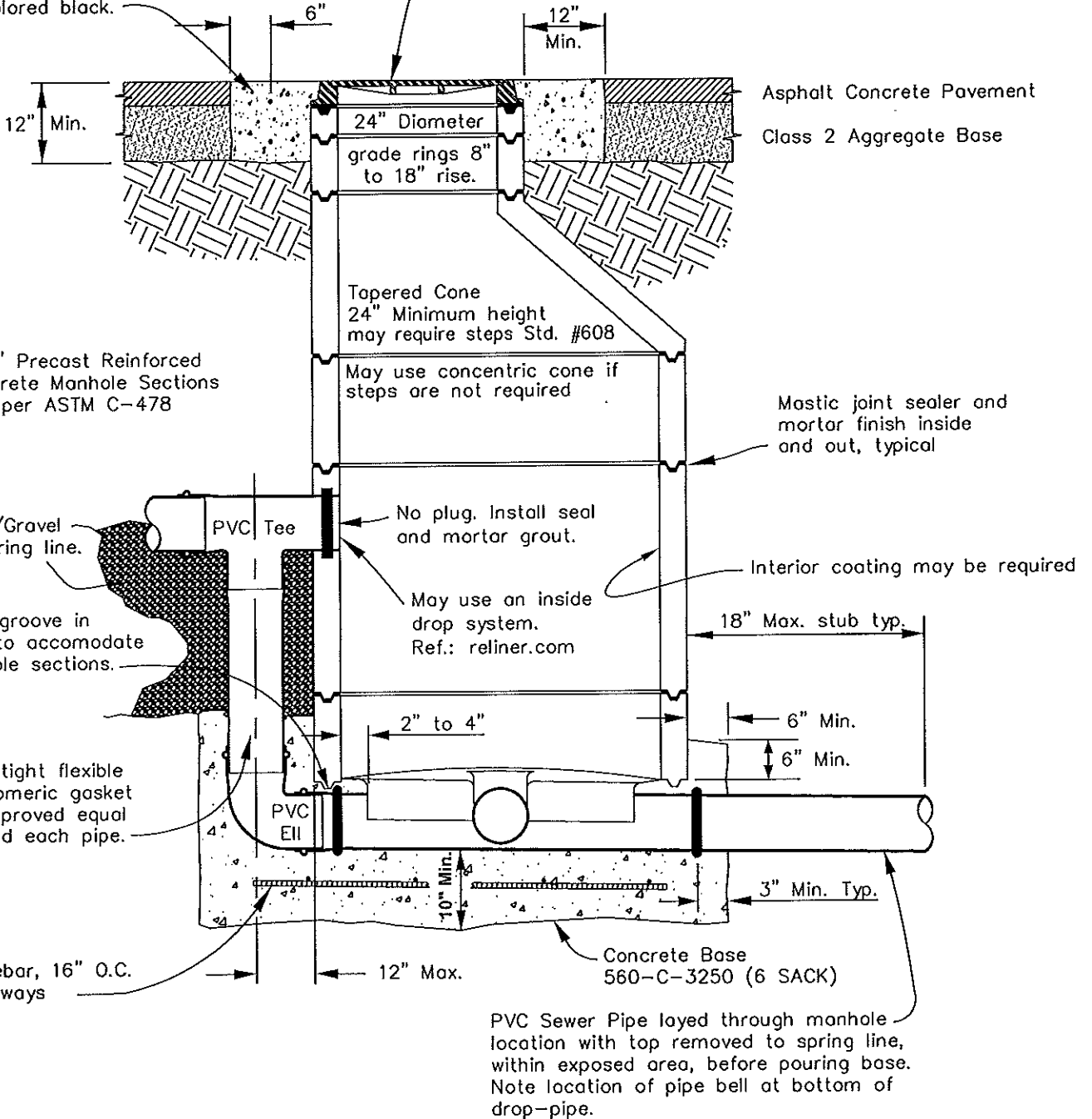
602
 2 OF 2

APPROVED BY DIRECTOR
 OF PUBLIC WORKS


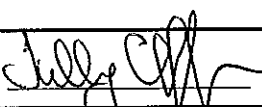
DO NOT SCALE
 DRAWING

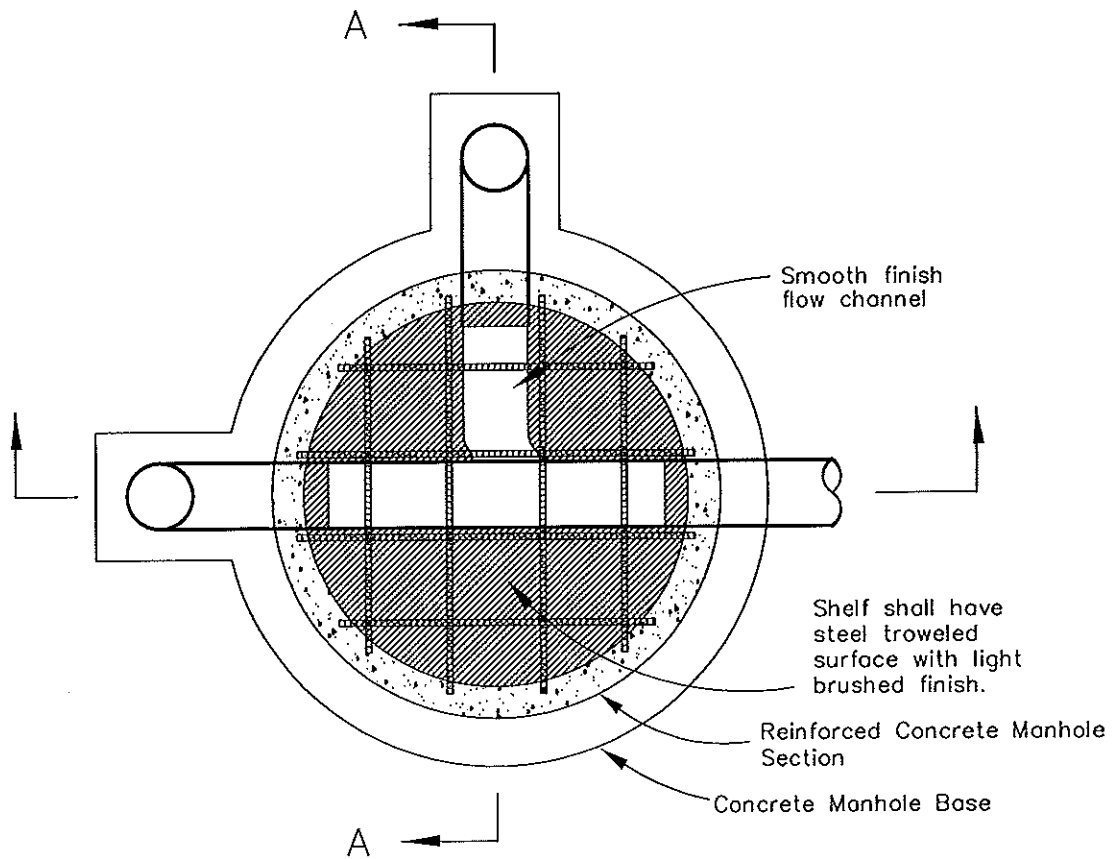
560-C-3250 Concrete to top of subgrade with two #4 bars. Concrete shall be colored black.

Manhole Frame and Cover Alhambra No. A-1254 or equal. Use Class "B" Mortar to set to grade. Offset MH upslope.

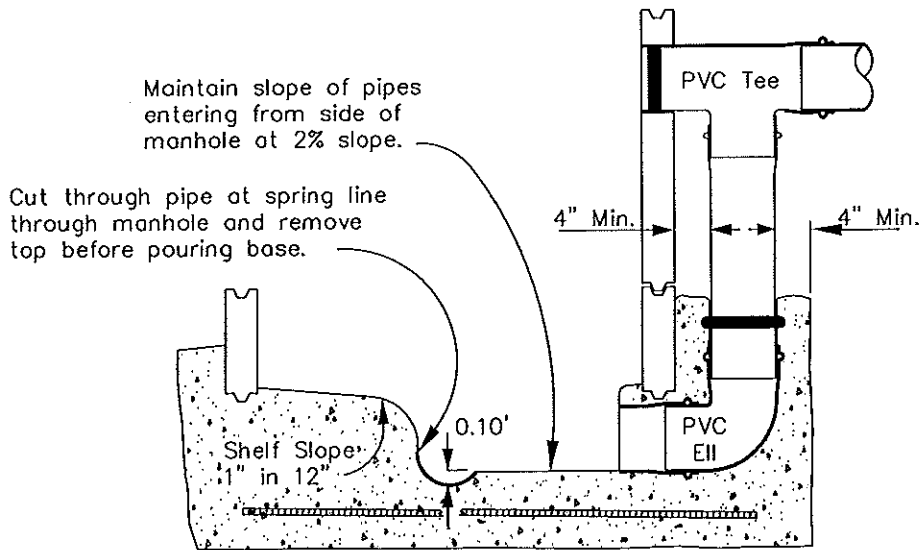


SECTION THROUGH DROP MANHOLE

	CITY OF SOLVANG - STANDARD DETAILS		ISSUED: 11-24-2003 REVISED: 5-9-2008
	SANITARY SEWER OUTSIDE DROP MANHOLE		DRAWING NUMBER <h1 style="margin: 0;">603</h1>
	APPROVED BY DIRECTOR OF PUBLIC WORKS 	DO NOT SCALE DRAWING	1 OF 2



PLAN OF DROP MANHOLE BASE



SECTION A-A



CITY OF SOLVANG - STANDARD DETAILS

ISSUED: 11-24-2003

REVISED: 6-1-2008

SANITARY SEWER OUTSIDE DROP MANHOLE

DRAWING NUMBER

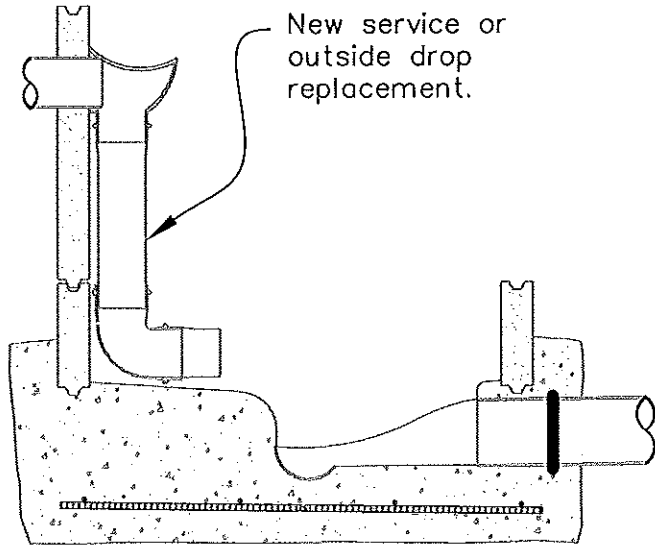
603

APPROVED BY DIRECTOR
OF PUBLIC WORKS

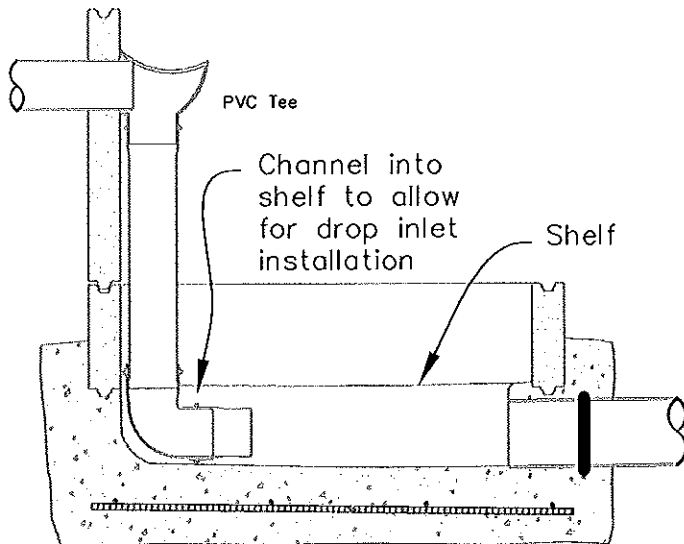
Jully Cliff

DO NOT SCALE
DRAWING

2 OF 2



EXISTING MANHOLE



NEW MANHOLE

NOTES:

1. Connector pipe shall be of same diameter as sewer pipe.
2. See Standard Details #602 & #603 for manhole notes.
3. Foundation for drop connection is to be poured integrally with manhole base.
4. All pipe and fittings shall be SDR-35 P.V.C. per ASTM 3034.
5. To be used on new construction or when external drop is not functioning properly.
6. Not recommended for use in areas with high Hydrogen Sulfide.



CITY OF SOLVANG - STANDARD DETAILS

INSIDE MANHOLE DROP INLET

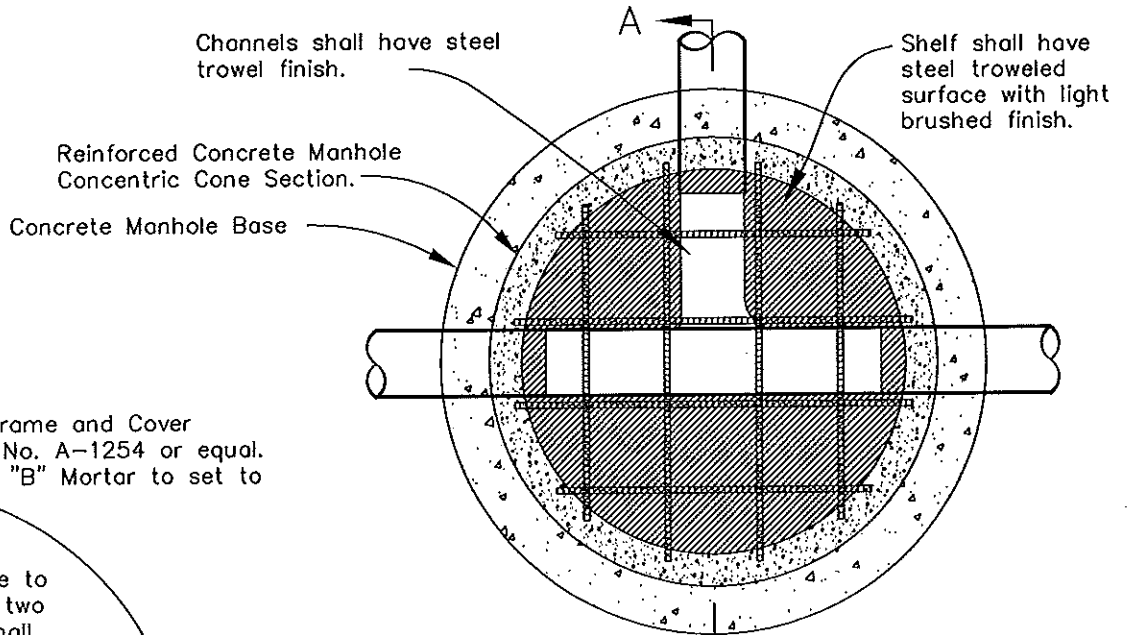
APPROVED BY DIRECTOR
OF PUBLIC WORKS

DO NOT SCALE
DRAWING

ISSUED: 6-11-2008
REVISED:

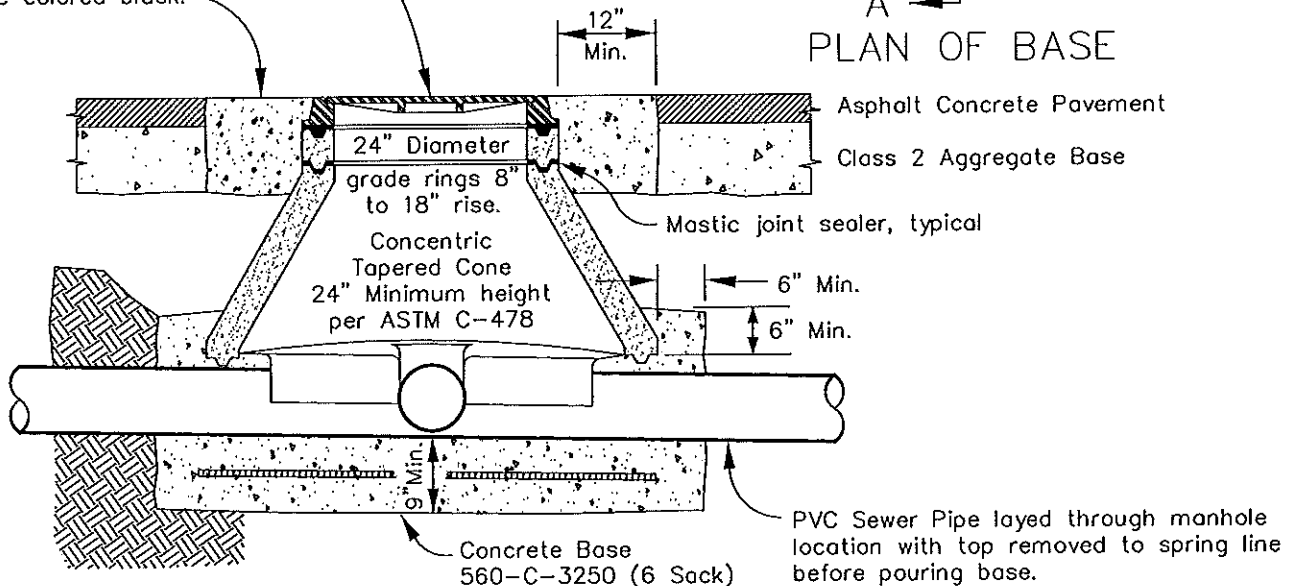
DRAWING NUMBER

604
1 OF 1



PLAN OF BASE

560-C-3250 Concrete to top of subgrade with two #4 bars. Concrete shall be colored black.



SECTION A-A

Maintain slope of pipes entering from side of manhole.



CITY OF SOLVANG - STANDARD DETAILS

SHALLOW SANITARY SEWER MANHOLE

APPROVED BY DIRECTOR OF PUBLIC WORKS

DO NOT SCALE DRAWING

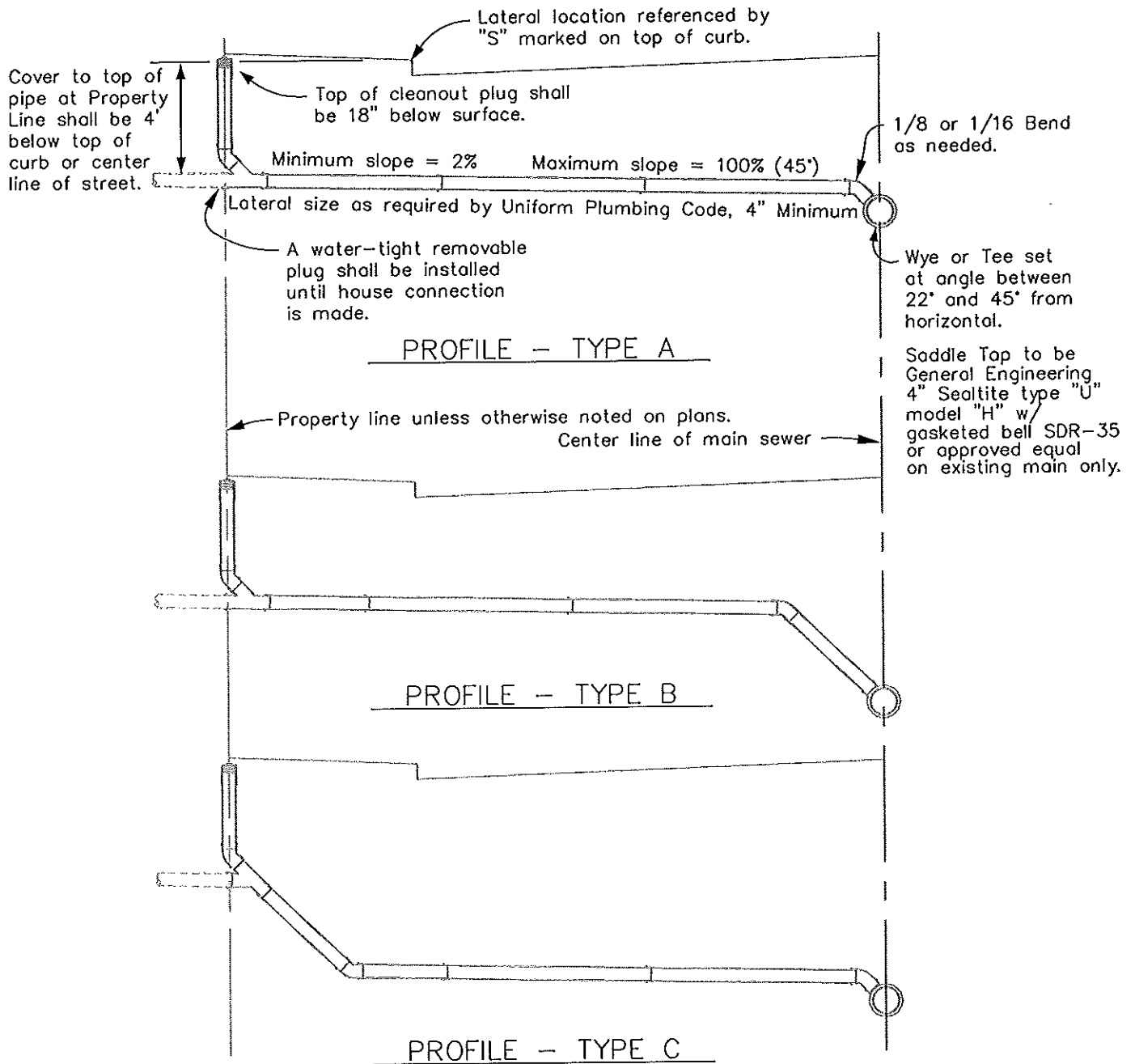
ISSUED: 11-24-2003

REVISED: 5-9-2008

DRAWING NUMBER

605

1 OF 1



NOTES:

1. Except as otherwise indicated on the plans or in the specifications, all laterals shall be Type "A" and shall be constructed on straight lines and grades between control points and elevations.
2. Material may be Polyethylene Pipe, HDPE, ABS Solid Wall Pipe, PVC Pipe or clay with fittings of the same material. Pipe and fittings shall be installed in conformance with manufacturer's recommendations.
3. A permit and inspection is required from Building Dept for any lateral installation or replacement. A public works permit is required for any encroachment into the public right-of-way or mainline attachment.



CITY OF SOLVANG - STANDARD DETAILS

SANITARY SEWER SERVICE LATERAL

APPROVED BY DIRECTOR OF PUBLIC WORKS

Julie C. [Signature]

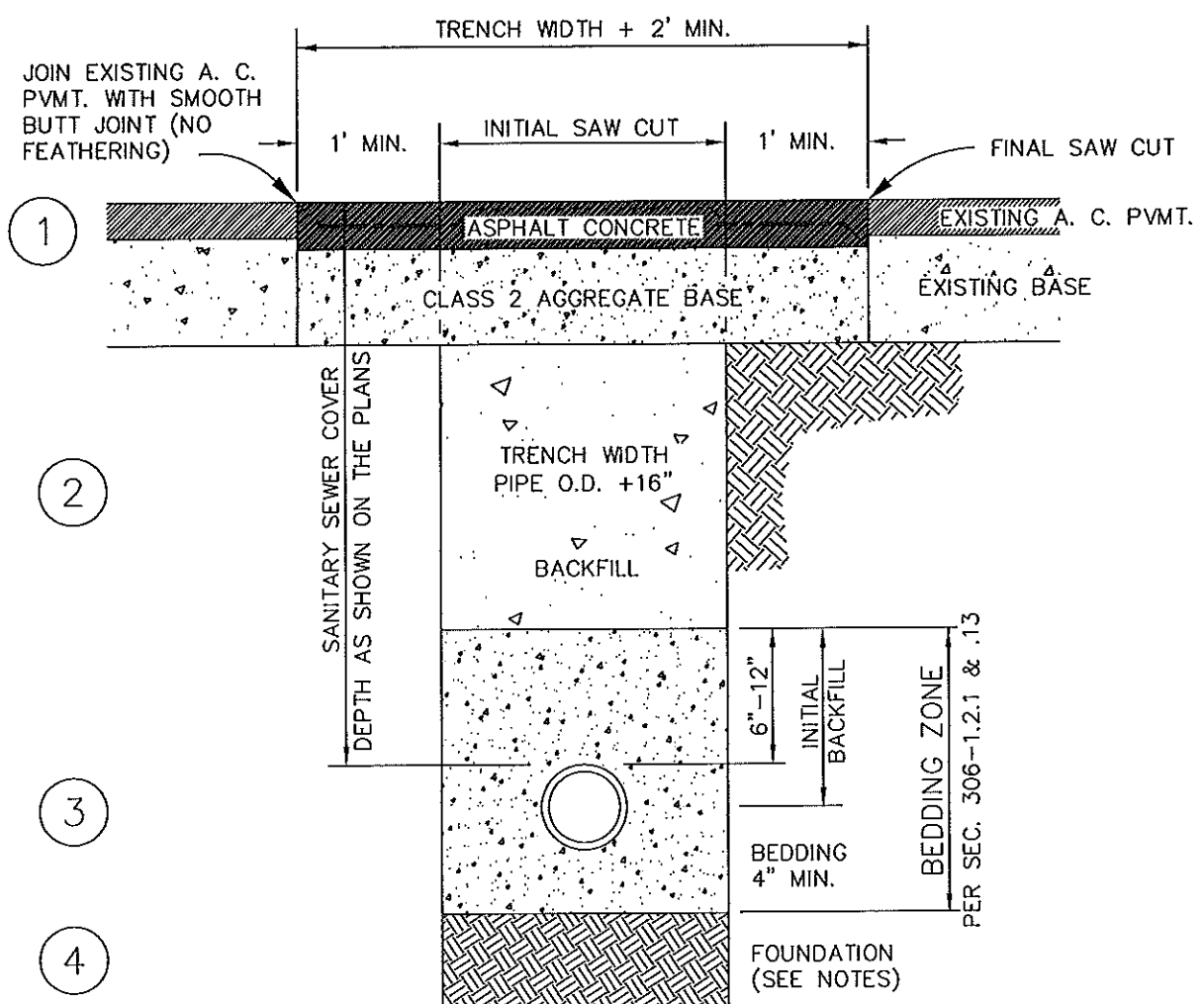
DO NOT SCALE DRAWING

ISSUED: 11-24-2003
 REVISED: 6-11-2008

DRAWING NUMBER

606

1 OF 1



NOTES:

1. REPLACEMENT SECTION FOR ASPHALT CONCRETE PAVING SHALL BE NOT LESS THAN 4" OF ASPHALT CONCRETE ON NOT LESS THAN 6" OF CLASS 2 AGGREGATE BASE (CALTRANS SPEC.). IF THE EXISTING SECTION EXCEEDS THESE VALUES, MATCH EXISTING THICKNESSES. IF EITHER SAW CUT LINE IS WITHIN 4' OF THE EDGE OF GUTTER, ALL PAVEMENT BETWEEN THE EDGE OF GUTTER AND THE FARTHER SAW CUT LINE SHALL BE REMOVED AND REPLACED.
2. BACKFILL UNDER EXISTING OR PROPOSED PAVING, INCLUDING SIDEWALKS, SHALL BE CEMENT SLURRY CLASS 100-E-100 (1 SACK/CUBIC YARD). IN OTHER LOCATIONS, BACKFILL SHALL BE PER SECTION 306-1.3.1 WITH MAXIMUM SIZE OF ROCKS BEING 2-1/2" IN ANY DIMENSION.
3. BEDDING MATERIAL SHALL BE COMPOSED OF CRUSHED ROCK CONFORMING TO SUBSECTION 200-1.2 WITH 1/2" MAXIMUM GRADATION. BEDDING SHALL BE COMPACTED TO NOT LESS THAN 90% RELATIVE DENSITY. IF NATIVE MATERIAL IS SAND, GRAVEL OR SANDY-GRAVEL, AND IF APPROVED BY THE ENGINEER, BEDDING NEED NOT EXTEND BELOW THE PIPE.
4. IF THE FOUNDATION IS FOUND TO BE EXPANSIVE OR ORGANIC MATERIAL, SAID MATERIAL SHALL BE REMOVED UNTIL SUITABLE MATERIAL IS FOUND. THE REMOVED MATERIAL SHALL BE REPLACED WITH MATERIAL MEETING THE REQUIREMENTS FOR BACKFILL.



CITY OF SOLVANG - STANDARD DETAILS

ISSUED: 11-24-2003
 REVISED: 11-2-2007

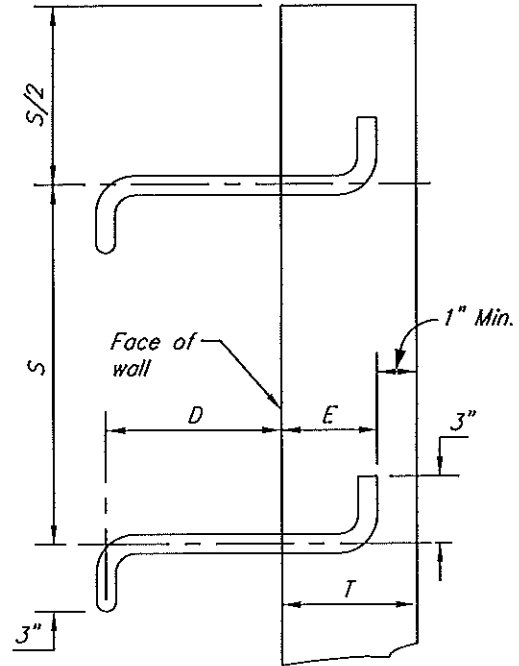
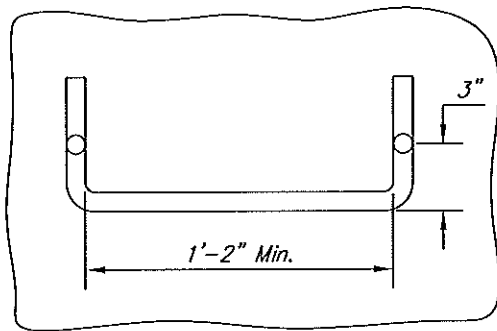
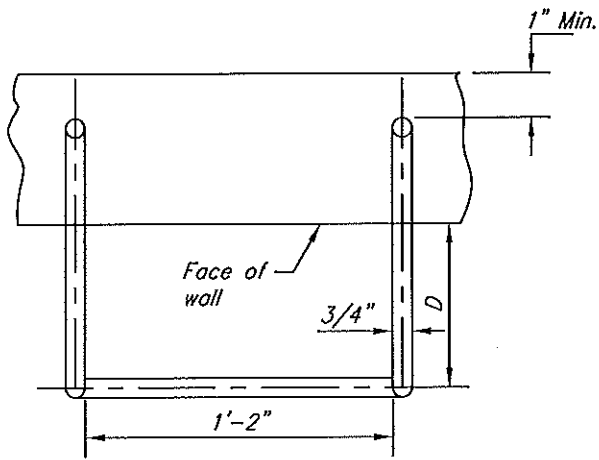
SANITARY SEWER TRENCH

DRAWING NUMBER

607
 1 OF 1

APPROVED BY DIRECTOR
 OF PUBLIC WORKS

DO NOT SCALE
 DRAWING



1. Steps shall be fabricated of stainless steel and/or plastic conforming to ASTM A 276, 300 series and shall have a minimum diameter of 3/4".
2. Unless otherwise noted on drawings or Standard Details for specific structures: $D = 5"$, $E = 6"$ or $T = 1"$ whichever is less, $S = 16"$ maximum, evenly spaced.
3. Bottom step shall be not more than 24" above floor or shelf.
4. Steps shall be cast into the manhole sections at time of manufacture.
5. Stainless steel reinforced copolymer polypropylene plastic manhole steps, Model PS2-PFS, as manufactured by M. A. Industries, Inc., Kelly & Dividend Drives, Peachtree City, Georgia 30269, may be used in lieu of the above, when installed in conformance with the manufacturer's recommendations and spaced as set forth in Note 2 above.
6. Steps may be required for any manhole 4' deep or greater.



CITY OF SOLVANG - STANDARD DETAILS

STAINLESS STEEL MANHOLE STEP

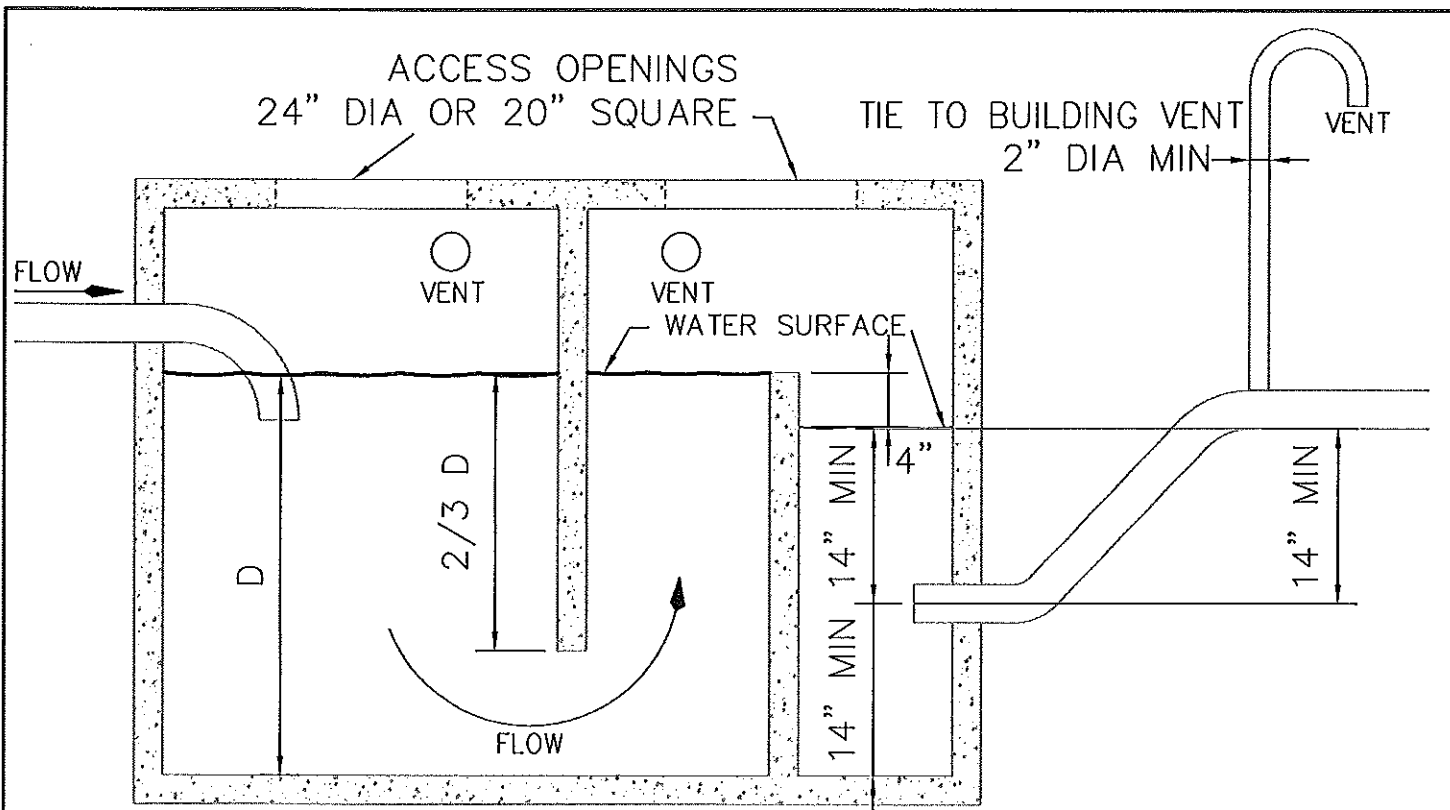
APPROVED BY DIRECTOR
OF PUBLIC WORKS

DO NOT SCALE
DRAWING

ISSUED: 11-24-2003
REVISED: 11-2-2007

DRAWING NUMBER

608
1 OF 1



1. INFLOW INTO TANK SHALL BE SO CONSTRUCTED THAT NO DISCHARGE WILL BE MADE ABOVE THE WATER SURFACE ELEVATION.
2. DISCHARGE LINE AND TANK SHALL BE VENTED.
3. TANK SHALL BE DESIGNED WITH TWO BARRIER WALLS. FLOW TO BE UNDER THE FIRST AND OVER THE SECOND BARRIER. FIRST BARRIER SHALL EXTEND DOWN TO A MINIMUM OF 2/3 OF THE WATER DEPTH. SECOND BARRIER SHALL BE SMOOTH AND FLAT ACROSS THE TOP AND IT'S ELEVATION SHALL PROVIDE FOR THE MAJOR PORTION OF THE TANK'S WATER SURFACE ELEVATION TO BE FOUR (4) INCHES ABOVE THE WATER SURFACE ELEVATION, OVER THE DISCHARGE POINT INTO MAIN SEWER SYSTEM.
4. CONSTRUCTION MATERIAL SHALL BE OF PORTLAND CEMENT CONCRETE, STAINLESS STEEL, HEAVY GAGE STEEL WITH A PERMANENT BITUMINOUS COATING, OR ALUMINUM. THE STRUCTURE SHALL BE DESIGNED AND CONSTRUCTED AS A PERMANENT INSTALLATION AND FOR NOT LESS THAN THE SAME LIFE AS THE CONNECTED BUILDING. THE STRUCTURE SHALL BE CAPABLE OF SUPPORTING (H-20) VEHICLE LOADS WHEN PLACED IN ANY VEHICLE ACCESS POINT.
5. EACH CELL OF TANK SHALL HAVE AN EXTERIOR ACCESS FOR EASY INSPECTION, MAINTENANCE, AND CLEANING. ACCESS OPENING SHALL BE A MINIMUM OF 24" DIAMETER OR 20" SQUARE. THE STRUCTURE SHALL BE OF WATER-TIGHT CONSTRUCTION AND LIMIT THE ENTRANCE OF DRAINAGE AND GROUND WATER.



CITY OF SOLVANG - STANDARD DETAILS

ISSUED: 11-24-2003
 REVISED:

GREASE TRAP

DRAWING NUMBER

609

APPROVED BY DIRECTOR
 OF PUBLIC WORKS

DO NOT SCALE
 DRAWING

1 OF 1